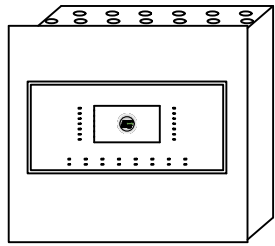


- IT
- collegare la schermatura a terra in un solo punto (in centrale)
 - la schermatura deve essere continua su tutto il cavo i conduttori devono essere isolati dalla schermatura
- EN
- connect the shielding to the ground at one point (at the control panel)
 - the shielding must be continuous on the entire cable the conductors must be isolated from the shielding

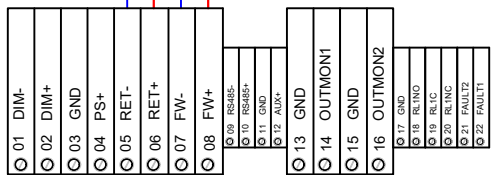
ADDRESSABLE MODULE FOR CONVENTIONAL DETECTORS CONNECTION COLLEGAMENTO MODULO INDIRIZZATO PER SENSORE CONVENZIONALE

BASE CONVENZIONALE - STANDARD BASE mod. ORBIS IS BASE
 SENSORI - DETECTOR mod. ORBIS IS optical, ORBIS IS multisensor, ORBIS IS heat

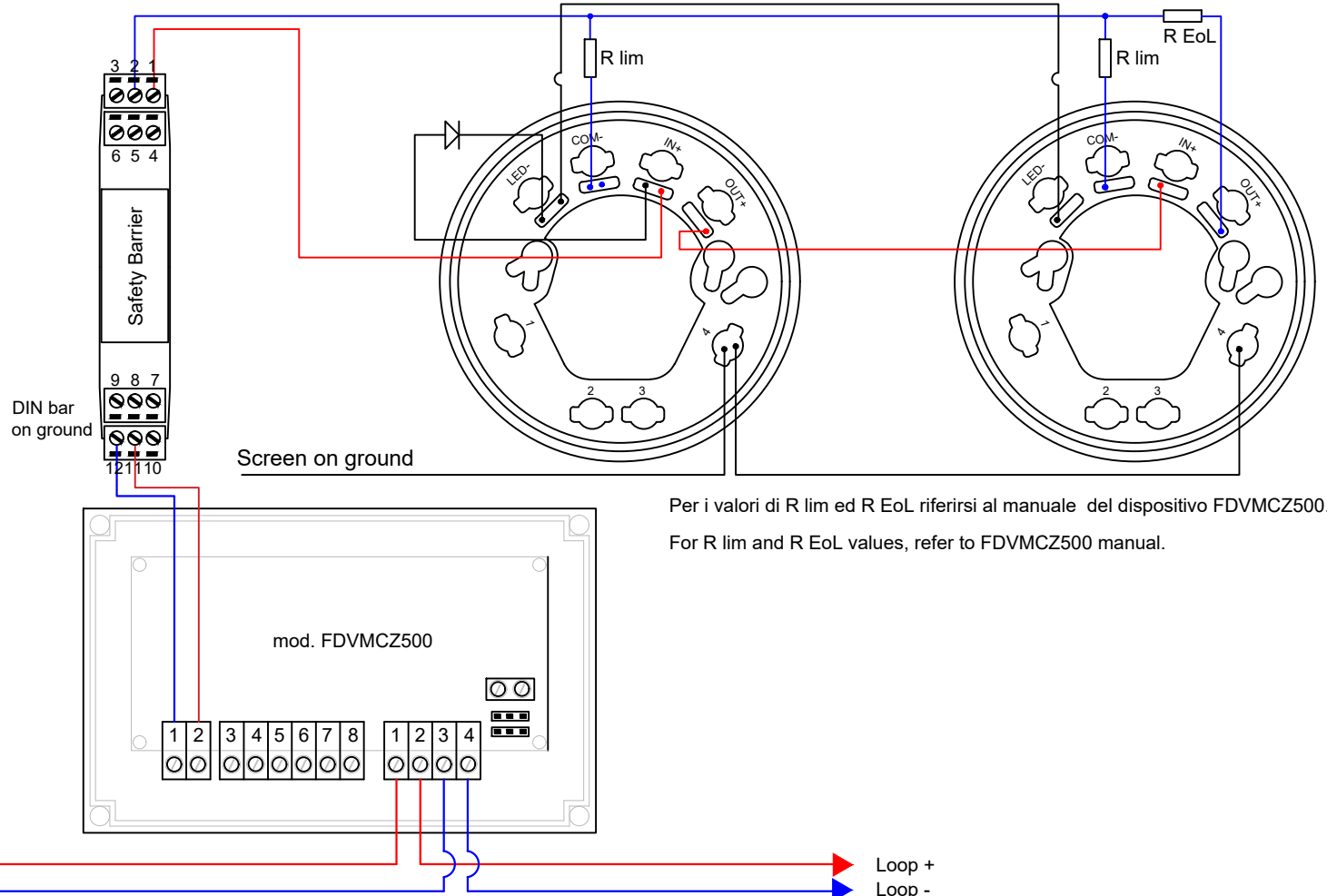


twisted and shielded cable with two wires
 cavo twistato e schermato a due conduttori
 LSZH GR4 EN50200 CEI20-36/20-37

da dispositivi su loop
 from other devices on loop



CONNECTOR on CARD TD595
 CONNETTORE su SCHEDA TD595



Per i valori di R lim ed R EoL riferirsi al manuale del dispositivo FDVMCZ500.
 For R lim and R EoL values, refer to FDVMCZ500 manual.

Distances with detectors, modules I/O or call points (max 240 for loop)

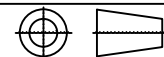
- 1250 mt. 2x0,5 mmq
- 1850 mt. 2x0,75 mmq
- 2500 mt. 2x1 mmq
- 3500 mt. 2x1,5 mmq
- 5000 mt. 2x2,5 mmq

For addressable sounder or wireless receivers the distance depends on the quantity of devices.

Distanze con sensori, moduli I/O o pulsanti (max 240 per loop)

- 1250 mt. 2x0,5 mmq
- 1850 mt. 2x0,75 mmq
- 2500 mt. 2x1 mmq
- 3500 mt. 2x1,5 mmq
- 5000 mt. 2x2,5 mmq

Per sirene indirizzate o ricevitori via radio la distanza viene dimensionata in funzione del numero di dispositivi.



MOD. MINIONE
 mod. FDVMCZ500_atex

N°059_one

FAMILY: FIRE SYSTEM TYPE: MODULE FOR CONVENTIONAL DETECTORS



Via Brescia 24/G 20063 Cernusco Sul Naviglio - Milano
 Tel. +39 02-2592795 +39 02-27201352